



IZZY TABLE LIGHT

A compact lamp that makes a big statement, the Izzy Table Lamp has a small weighted base and a slim stem with beautifully crafted indented details in the brass work. The coolie brass shade is adjustable which gives you careful control of the lighting projection. Shown in antique brass. Also available in a floor lamp.

Dimensions

Height (including shade): 460 mm

Shade size: 276mm x 55 mm x 160 mm slope

Technical Details

Lamp Type 1 x B22 UK, 1 x E27 EU, 1 x E26 US | 240v/110v

Finish Options All finishes available

Lamp Type Energy Saving LED only

Shade Options Metal/cloth

Lead Time 4 - 6 weeks

Similar Lamp Options

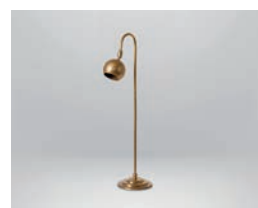
Reeded Candle Stick

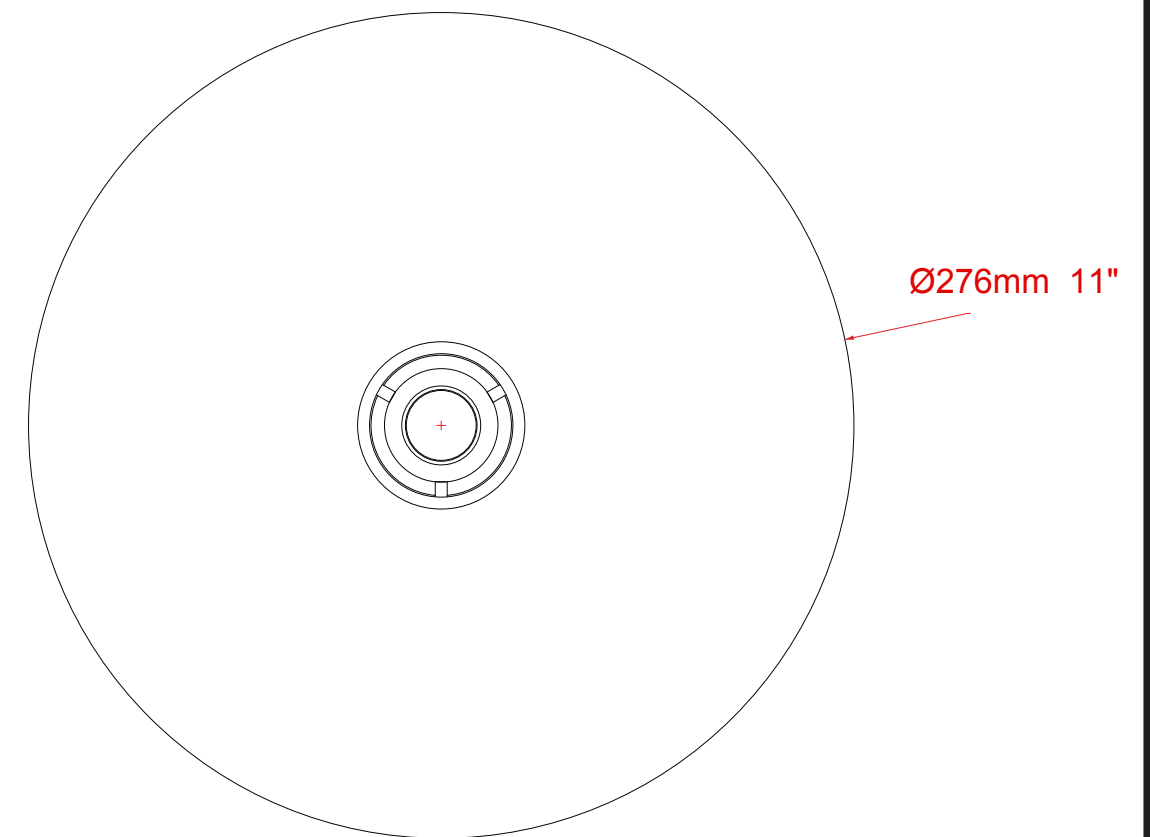
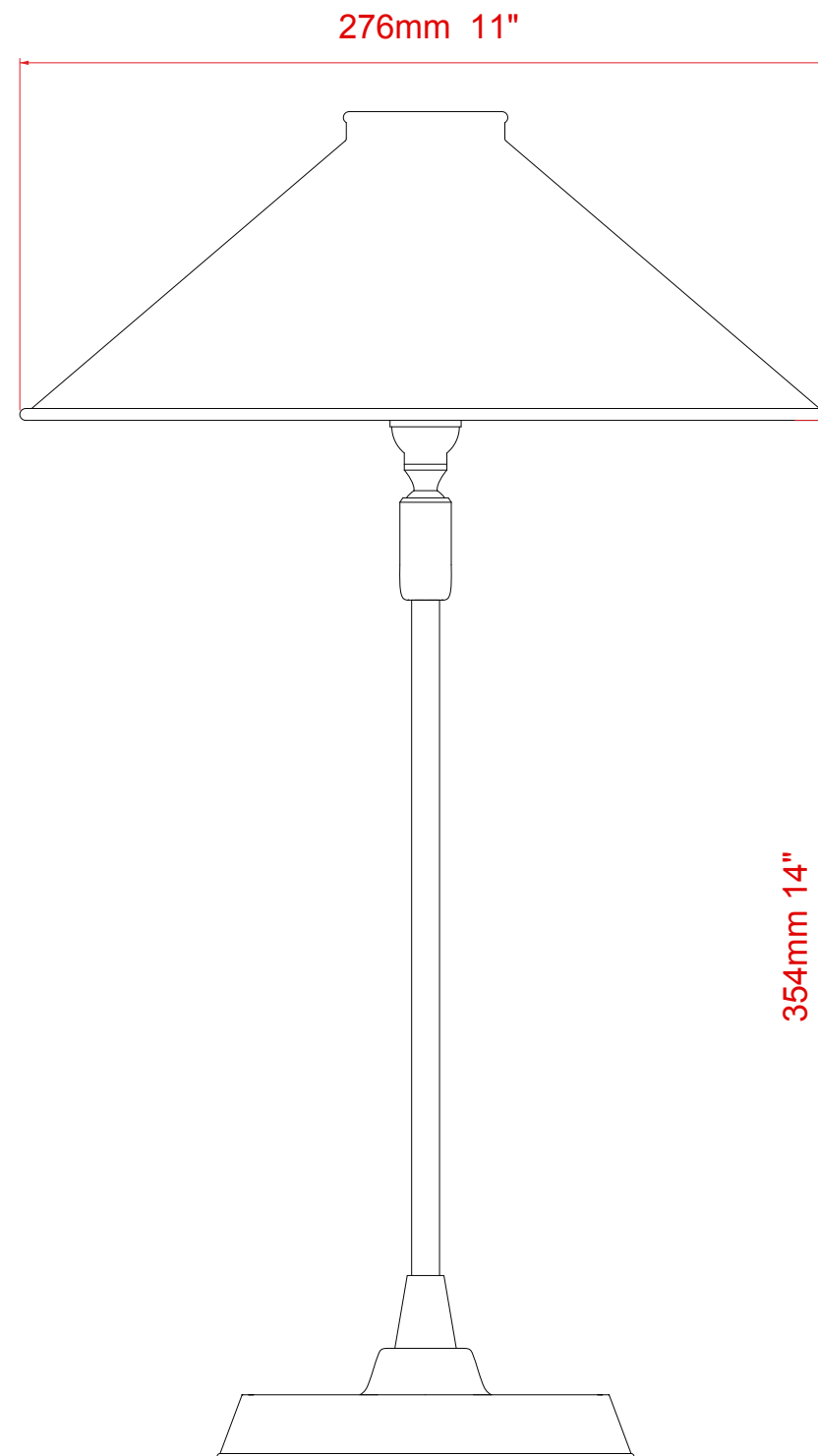


The Brooke Reflector Lamp



The Belmore Table LampEffect





Drawing Name:

Izzy Table Lamp

Material: Brass